

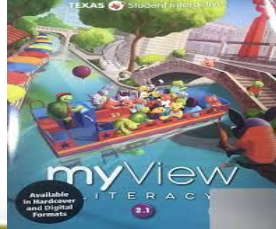
A little bit about myself



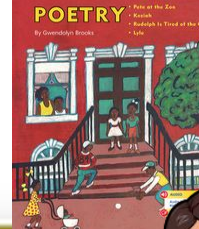
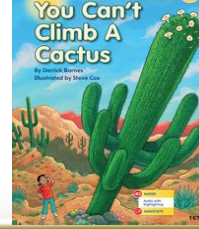
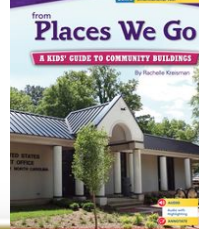
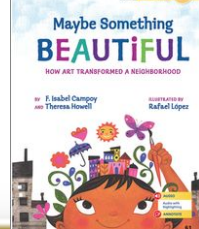
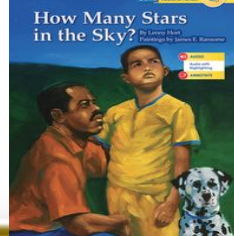
- I was born and raised in Brownsville.
- I enjoy teaching and learning new things every day.
- I have taught for 18 years.
- My favorite hobbies are scrapbooking, sketching, making jewelry, and designing t-shirts.
- Favorites: all shades of the color purple & teal, giraffes, angels, butterflies, and dolphins.
- Most importantly, I love to see my students' eyes light up when they understand a new concept.



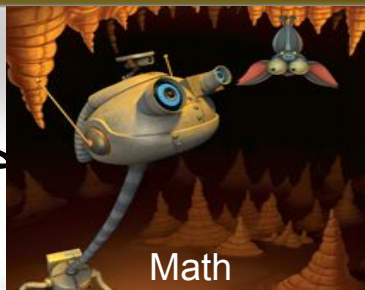
Reading



STORIES



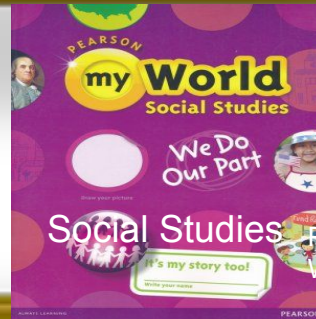
Math, Science, & Social Studies



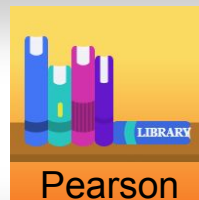
Math



Science



Remote Learning Platforms



Pearson



Spelling City



<https://clever.com/in/>

<https://www.getepic.com/sign-in>



Meet

First Day of School is Tuesday, August 25th .

We will meet promptly at 8:05 AM.



Daily Schedule



Period	Time	Subject
1	8:05 - 8:50 45 min	READING / ELA 45 min Synchronous
2	9:00 - 9:45 45 min	READING / ELA 45 min Asynchronous
3	9:55 - 10:40 45 min	MATH 45 min Synchronous
4	10:50 - 11:35 45 min	PE (Tues, Wed, Fri) ART (Mon) / MUSIC (Thurs) 30 min Sync / 15 Async
11:35 - 12:30 55 min		STUDENT LUNCH
5	12:30 - 1:15 45 min	SCIENCE 45 min Synchronous
6	1:25 - 2:10 45 min	SOCIAL STUDIES 45 min Synchronous COUNSELOR (Tues) / LIBRARY (Wed)
7	2:20 - 3:15 55 min	ASYNCHRONOUS TIME

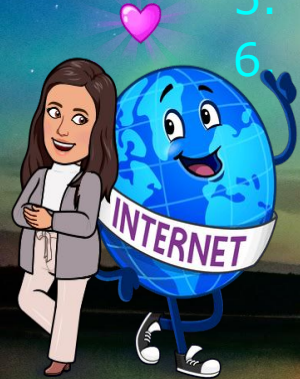
2020-2021



Clever Sign-In

All school resources will be found in this location. It is a portal to sign in to all applications.

1. Go to www.bisd.us
2. Find the Quicklinks Tab on the right hand side.
3. Select "Clever".
4. Click on "Login to Clever"
 - a. If available, you can select the "Clever Badge Login"
5. Username: Student ID number
6. Password: Student ID Number



Connecting to Clever English: <https://youtu.be/WIWg6uMXyV4>
Connecting to Clever Spanish: <https://youtu.be/a8bML2luyOU>



Accessing Seesaw

- **On the web:**
 - Once logged into Clever, find the **Seesaw** App and select it.
- **Through App**
 - **Seesaw Class**
 - For Students
 - Sign in by scanning Clever Badge or by entering the Clever username and password
 - **Seesaw Parent and Family**
 - Parents will receive an invite from teacher



Seesaw for BISD Families English: <https://youtu.be/SSfi5oFSw88>

SeeSaw for BISD Families Spanish: <https://youtu.be/PRingXOQUAQ>



Google Classroom

- On the Web:
 - Once logged into **Clever**, find the **Google Classroom** App and select it.
- Through the App
 - “Google Classroom”
 - Click on **Meet Link** and it will connect you to our Synchronous (Live) Class



Google Classroom for BISD Families English: https://youtu.be/ODV7EaA_Cb4

Google Classroom for BISD Families Spanish: <https://youtu.be/Js0Mj2FHbBM>



Google Meet For Synchronous Learning



- Access the "Google Classroom" app through Clever.
- Find our class and select it.
- At the top of the page find the Meet Link and select it.
- The link will be the same one for the entire school year.



Schoology

This new classroom and learning management system will SOON be available.

It will allow parents to do the following:

- a. Student progress monitoring
- b. Gradebook
- c. Attendance
- d. Communicate with teacher



schoology®

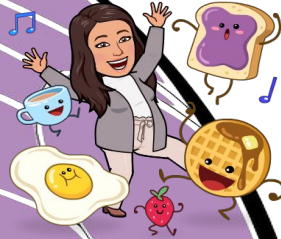
When it becomes available we will let you know!

Virtual Classroom Expectations

REST UP



Get a good night's sleep so you are focused in the morning!



Eat breakfast before coming to class. No drinks or food around the computer.



Find a comfy spot, get dressed, and sit up tall.



Make sure your sound is on so you can hear the teacher.

MUTE



If you are not speaking, please put your device on mute.



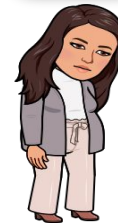
Have your supplies, homework and passwords handy.



Double check your work before turning it in and turn it in on time.

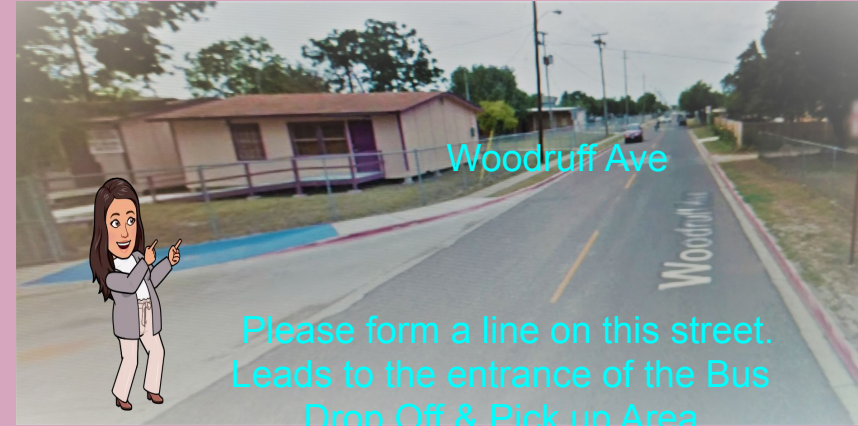


Participate in activities when you are asked to participate.



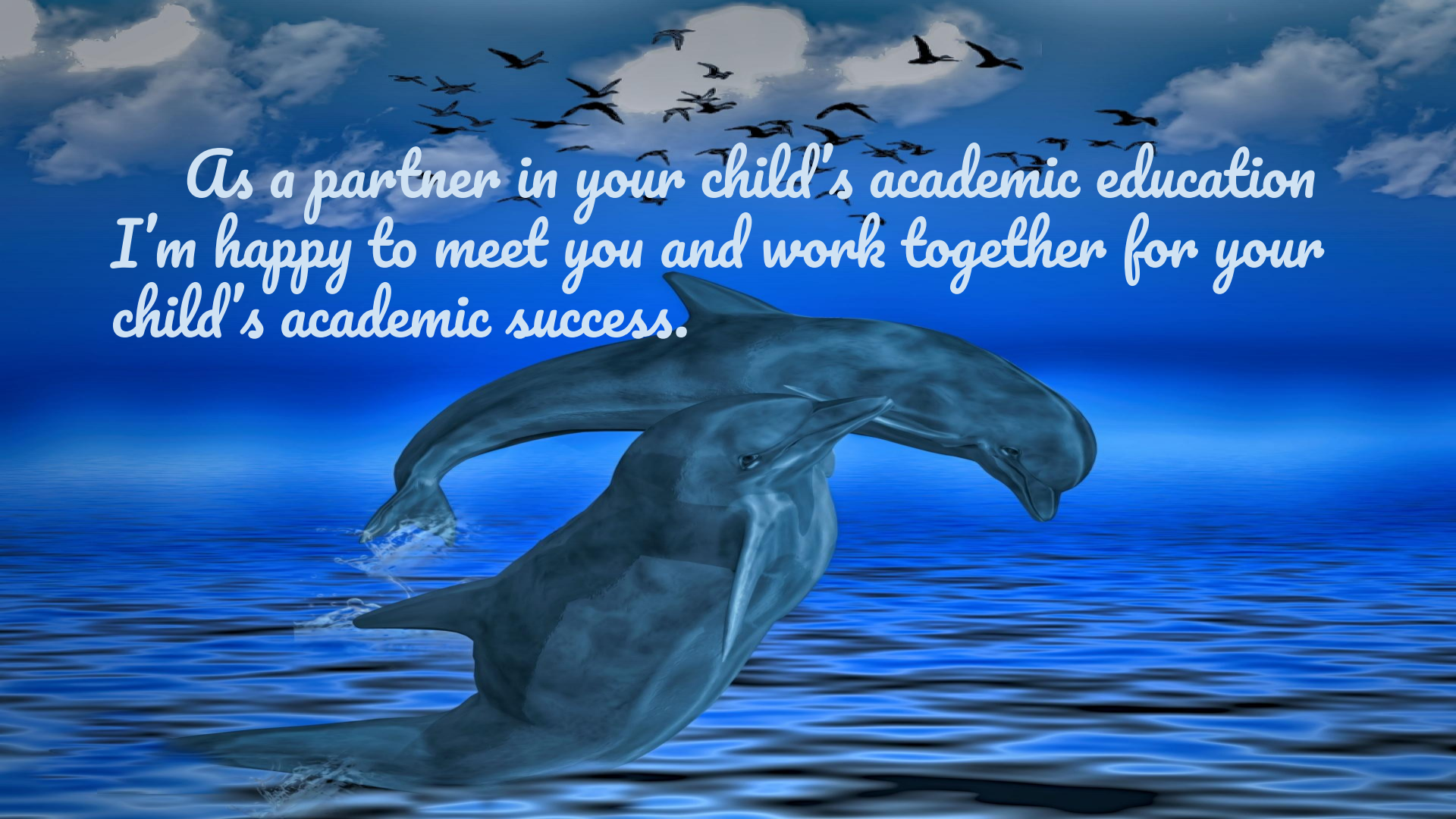
Charge your device each night or make sure you have a plug nearby.

BISD Student Meals Curbside



- **Student Meals Curbside** available between the hours of **10:00am to 1:00p.m.**
- Please display the **BAR CODED ID LETTER** that was mailed to you on your windshield.
- Meals will be served by our **Bus Area** on **Stanford Ave** and **Woodruff Avenue** by our **Pre-K classrooms.**
- Please form a line on Woodruff Avenue that leads to our Bus Area.

*As a partner in your child's academic education
I'm happy to meet you and work together for your
child's academic success.*



Contact Information



meparada@bisd.us

956-459-1456

Conference Time: 10:50 AM- 11:35 AM

